

# FUNNY PORTRAIT CARICATURE ACTION

## HELP GUIDE

---

### BEFORE USE THE ACTION PLEASE CHECK

1. You are using the English version of Photoshop.
2. Your photo is in RGB/8 bit color mode.
3. Make sure that the option "Add 'copy' to Copied Layers and Groups" is turned on.
4. Use high-quality photos. I recommend using images with a resolution of 3000-4000 pixels wide/high.

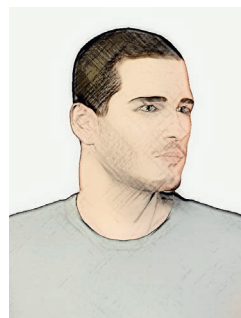
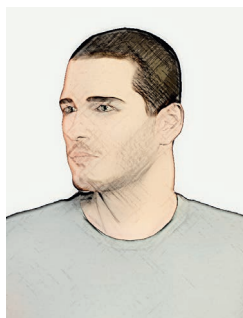
### HOW TO INSTALL THE ACTION

1. Go to the 'Window' menu and select 'Actions'.  
A window will now appear.
2. Inside the Actions window, click on the top right hand corner icon to reveal the drop down menu. From here select 'Load Actions...'.  
Select the action which came with the download.
3. The action will now appear in the actions panel.



### RECOMMENDATION FOR BEST RESULTS

#### HEAD ANGLE



#### CROPPING

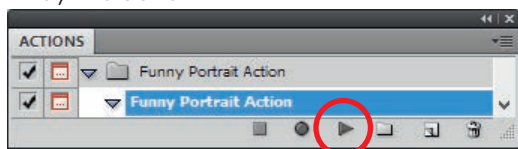


## HOW TO USE THE ACTION

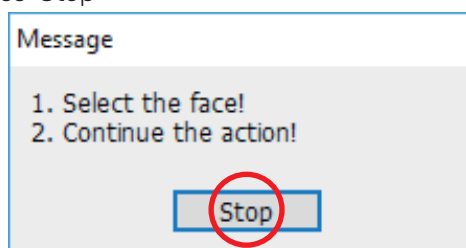
1. Open your image.



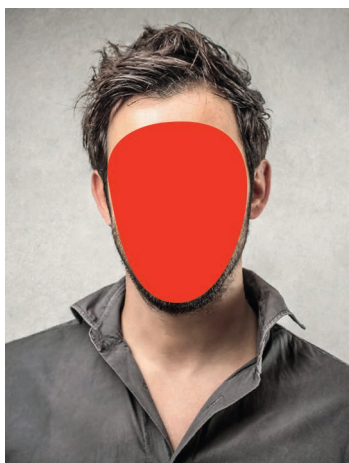
2. Play the action.



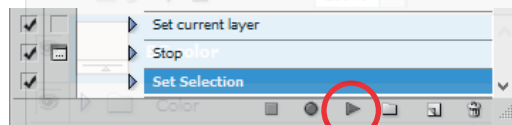
3. Photoshop pops up a new message box and automatically creates a new 'face' layer. Press 'Stop'



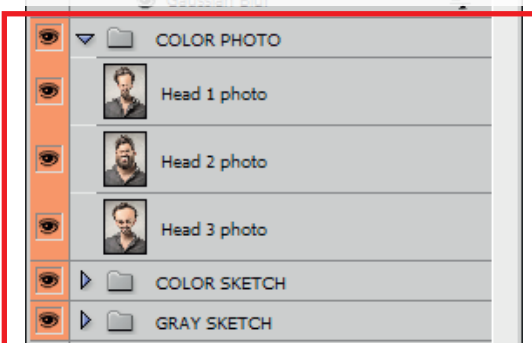
4. With the created layer selected, paint the face area. For best result draw or paint a hard edged symmetrical oval shape.



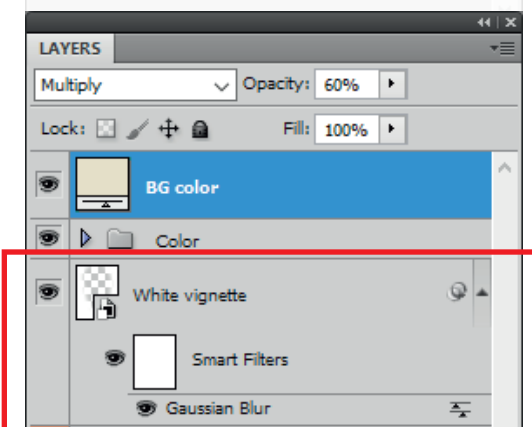
5. Continue the action.



6. Select your image.



7. Scale and move the white vignette layer and adjust the blurriness.



8. Change the color.

